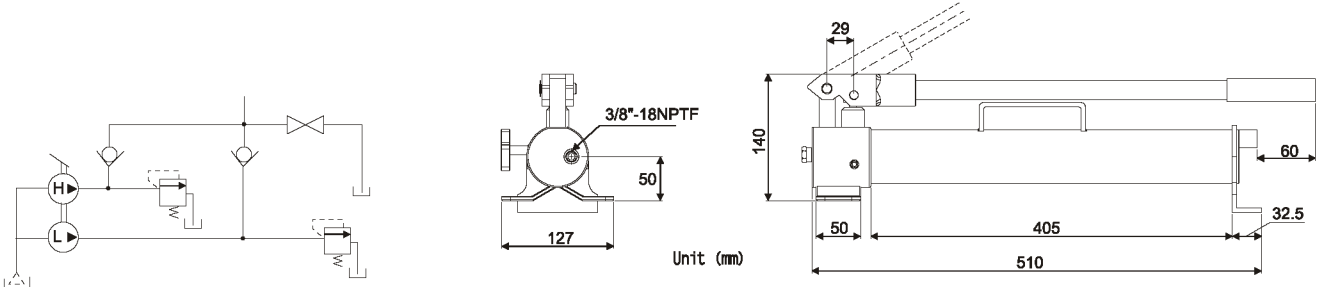


# DPHW Water/ Hydraulic Manual Pump

- Manual pump whose hydraulic fluid is "water" and can increase the pressure up to 700bar.
- Special rust-proof treatment is performed to the stainless-steel materials or special steel where the pump contacts water.
- Can be used in a place where the usage of oil is hesitated.
- A safe mechanism incorporating a safety valve like other time-tested 700 bar series.
- Automatic high-low pressure switching pump for improved work efficiency.



Pumps



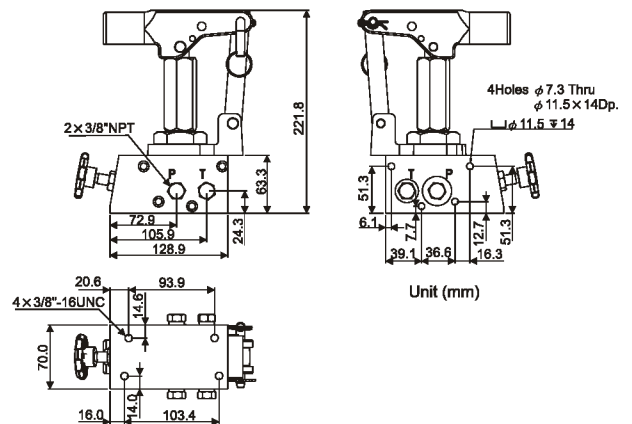
Model Number	Pressure Rating (psi)/(bar)		Output flow rate (c.c/stroke)		Water capacity (c.c)	Weight (No water) (kg)
	1 <sup>st</sup> stage	2 <sup>nd</sup> stage	1 <sup>st</sup> stage	2 <sup>nd</sup> stage		
DPHW-900	290(20)	10,000(700)	13.0	2.3	900	5.7

# DPHP Special Application Pump Head

- Adjustable linkage for reduced handle force.
- Swivel pump head for flexible fixturing.
- Wide range of operating pressures to select from.
- Design for tight mounting space, backup manual power or lower pressure and high flows.
- Design for applications when pumps oil tank need to be changed.
- DPHP and DPHH handle construct by Aluminum Alloy which dimension be  $\varnothing 22 * 60$  mm.



DPHP-210



Model No.	Pressure Rating (psi)/(bar)	Volume (c.c/stroke)	Max. Handle Eff. (kgf)	Weight (kg)
DPHP-50	750(50)	75	36	5
DPHP-70	1,000(70)	35	48	5
DPHP-210	3,000(210)	22	54	4
DPHP-450	6,500(450)	9	54	4
DPHP-700	10,000(700)	5	54	4