

DC Series



**Single-Acting**

Collar threads Cylinder  
Spring return

Capacity:  
**5-100 ton**

Stroke:  
**16-362mm**

Maximum Operating Pressure:  
**700 bar**

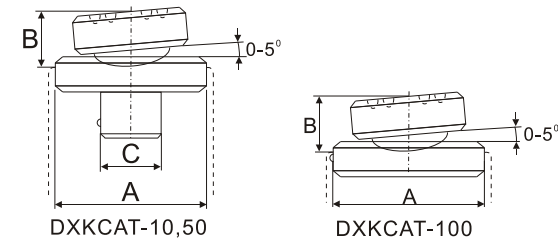
**DC Single-Acting, Collar threads Cylinders**

- Collar threads, plunger threads and base mounting holes enable easy fixturing (see page 12)
- Hard chrome plated plunger and inner of barrel resists wear and corrosion.
- Maximum sized springs speed piston return and increase spring life.
- Plunger wiper reduces contaminant.
- Stop ring for piston blow-out protection.
- Powder coat finish for increased corrosion resistance and antirust.
- All collar threads have a cap for protection.
- DQC-3/8UF coupler and dust cap are included on all models.



**Saddle**

DC-Series are equipped with hardened removable grooved saddles. For tilt saddle to fit.



Optional Saddle Dimensions (mm)				
Cylinder Model/Cap. (ton)	Model Number Type : Tilt			
		A	B	C
DC-10 , DC-15 Except DC-101	DXKCAT-10	35	15	22
DC-25 , DC-30	DXKCAT-50	50	23	35
DC-50 , DC-75 DC-100	DXKCAT-100	71	24	-



DC-152



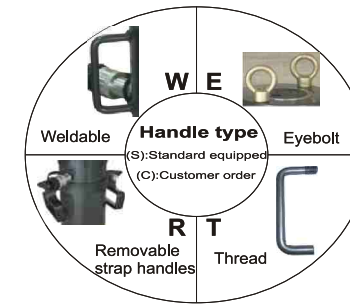
**Hydraulic Cylinder and Pump Sets**

Basic system set-up include cylinder, male/female coupler, hose, pressure gauge, gauge accessories and pump. Please connect DURAJACK office nearest to you for advice and technical assistance in the layout of your ideal.



**Think Safety**

- Manufacturer's rating of load and stroke are maximum safe limits.
- Good practice encourages using only 80% of these ratings!



**QUICK SELECTION CHART**

Handle type	Model Number	Cylinder Capacity	Stroke	Cylinder Effective Area	Oil Capacity	Collapsed Height	Plunger internal Thread	Weight	
									(C) (S)
	DC-50	5 (45)	16	6.5	10	41	* *	1.0	
	DC-51		25	6.5	16	110	3/4"-16	1.0	
	DC-53		76	6.5	50	165	3/4"-16	1.5	
	DC-55		127	6.5	83	215	3/4"-16	1.9	
	DC-57		177	6.5	115	273	3/4"-16	2.4	
	DC-59		232	6.5	151	323	3/4"-16	2.8	
	DC-101	10 (101)	26	14.5	38	89	#10-24UN	1.8	
	DC-102		54	14.5	78	121	1"-8	2.3	
	DC-104		105	14.5	152	171	1"-8	3.3	
	DC-106		156	14.5	226	247	1"-8	4.4	
	DC-108		203	14.5	294	298	1"-8	5.4	
	DC-1010		257	14.5	373	349	1"-8	6.4	
	DC-1012		304	14.5	441	400	1"-8	6.8	
	DC-1014		356	14.5	516	450	1"-8	8.2	
	DC-151	15 (142)	25	20.3	51	124	1"-8	3.3	
	DC-152		51	20.3	104	149	1"-8	4.1	
	DC-154		101	20.3	205	200	1"-8	5.0	
	DC-156		152	20.3	308	271	1"-8	6.8	
	DC-158		203	20.3	411	322	1"-8	8.2	
	DC-1510		254	20.3	516	373	1"-8	9.5	
	DC-1512		305	20.3	619	423	1"-8	10.9	
	DC-1514		356	20.3	723	474	1"-8	11.8	
	DC-251		25 (232)	26	33.2	86	139	1 1/2"-16	5.9
	DC-252			50	33.2	166	165	1 1/2"-16	6.4
	DC-254	102		33.2	339	215	1 1/2"-16	8.2	
	DC-256	158		33.2	525	273	1 1/2"-16	10.0	
	DC-258	210		33.2	697	323	1 1/2"-16	12.2	
	DC-2510	261		33.2	867	374	1 1/2"-16	14.1	
	DC-2512	311		33.2	1033	425	1 1/2"-16	16.3	
	DC-2514	362		33.2	1202	476	1 1/2"-16	17.7	
	DC-308	30(295)	209	42.1	880	387	—	18.1	
	DC-502	50 (498)	51	71.2	362	176	—	15.0	
T	DC-504		101	71.2	719	227	—	19.1	
T	DC-506		159	71.2	1131	282	—	23.1	
R	DC-5013		337	71.2	2399	460	—	37.6	
R	DC-756	75 (718)	156	102.6	1601	285	—	29.5	
R	DC-7513		333	102.6	3417	492	—	59.0	
R W	DC-1004	100 (933)	102	133.3	1355	204	—	33.1	
R E	DC-1006		168	133.3	2239	357	—	59.0	
R E	DC-1008		203	133.3	2709	357	—	59.0	
R E	DC-10010		260	133.3	3466	449	—	72.6	

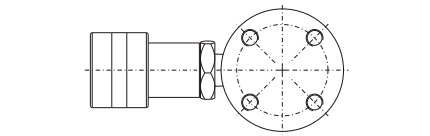
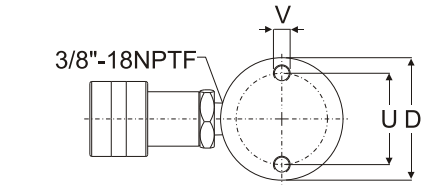
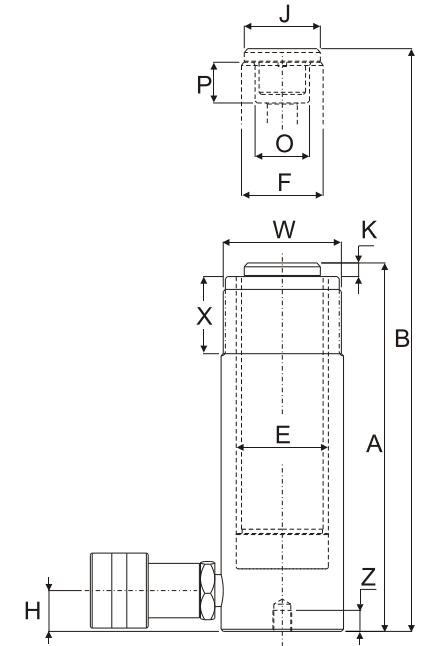
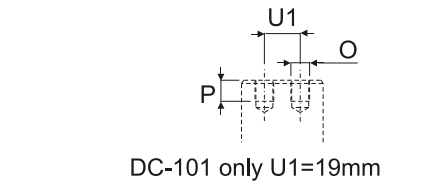
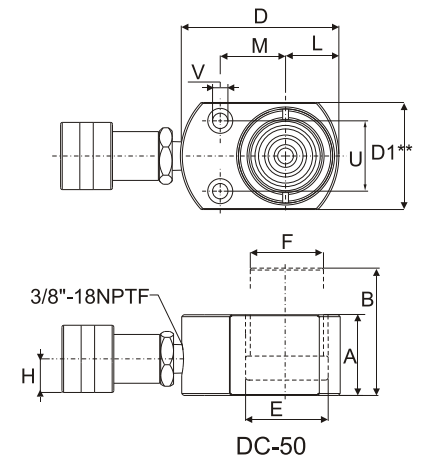
\* DC-50 cylinder has non-removable grooved saddle and no collar thread.

Model Number	Cylinder Capacity ton(kN)	Stroke (mm)	Cylinder Effective Area (cm <sup>2</sup> )	Oil Capacity (cm <sup>3</sup> )	Collapsed Height A (mm)	Extended Height B (mm)	Outside Diam. D (mm)	Cyl. Bore Diam. E (mm)	Plunger Diam. F (mm)	Base to Adv. Port H (mm)	Saddle Diam. J (mm)	Saddle Protrusion from Plngr. K (mm)
DC-50	5 (45)	16	6.5	10	41	57	58	28.7	25.4	19	*	*
DC-51		25	6.5	16	110	135	38	28.7	25.4	19	25	6
DC-53		76	6.5	50	165	241	38	28.7	25.4	19	25	6
DC-55		127	6.5	83	215	342	38	28.7	25.4	19	25	6
DC-57		177	6.5	115	273	450	38	28.7	25.4	19	25	6
DC-59		232	6.5	151	323	555	38	28.7	25.4	19	25	6
DC-101	10 (101)	26	14.5	38	89	115	57	42.9	38.1	19	—	—
DC-102		54	14.5	78	121	175	57	42.9	38.1	19	35	6
DC-104		105	14.5	152	171	276	57	42.9	38.1	19	35	6
DC-106		156	14.5	226	247	403	57	42.9	38.1	19	35	6
DC-108		203	14.5	294	298	501	57	42.9	38.1	19	35	6
DC-1010		257	14.5	373	349	606	57	42.9	38.1	19	35	6
DC-1012		304	14.5	441	400	704	57	42.9	38.1	19	35	6
DC-1014		356	14.5	516	450	806	57	42.9	38.1	19	35	6
DC-151	15 (142)	25	20.3	51	124	149	69	50.8	41.4	19	38	9
DC-152		51	20.3	104	149	200	69	50.8	41.4	19	38	9
DC-154		101	20.3	205	200	301	69	50.8	41.4	19	38	9
DC-156		152	20.3	308	271	423	69	50.8	41.4	25	38	9
DC-158		203	20.3	411	322	525	69	50.8	41.4	25	38	9
DC-1510		254	20.3	516	373	627	69	50.8	41.4	25	38	9
DC-1512		305	20.3	619	423	728	69	50.8	41.4	25	38	9
DC-1514		356	20.3	723	474	830	69	50.8	41.4	25	38	9
DC-251	25 (232)	26	33.2	86	139	165	85	65.0	57.2	25	50	10
DC-252		50	33.2	166	165	215	85	65.0	57.2	25	50	10
DC-254		102	33.2	339	215	317	85	65.0	57.2	25	50	10
DC-256		158	33.2	525	273	431	85	65.0	57.2	25	50	10
DC-258		210	33.2	697	323	533	85	65.0	57.2	25	50	10
DC-2510		261	33.2	867	374	635	85	65.0	57.2	25	50	10
DC-2512		311	33.2	1033	425	736	85	65.0	57.2	25	50	10
DC-2514		362	33.2	1202	476	838	85	65.0	57.2	25	50	10
DC-308	30(295)	209	42.1	880	387	596	101	73.2	57.2	57	50	10
DC-502	50 (498)	51	71.2	362	176	227	127	95.2	79.5	33	71	2
DC-504		101	71.2	719	227	328	127	95.2	79.5	33	71	2
DC-506		159	71.2	1131	282	441	127	95.2	79.5	35	71	2
DC-5013		337	71.2	2399	460	797	127	95.2	79.5	35	71	2
DC-756	75 (718)	156	102.6	1601	285	441	146	114.3	95.2	30	71	5
DC-7513	333	102.6	3417	492	825	146	114.3	95.2	30	71	5	
DC-1004	100 (933)	102	133.3	1355	204	306	177	130.3	104.9	41	71	2
DC-1006		168	133.3	2239	357	525	177	130.3	104.9	41	71	2
DC-1008		203	133.3	2709	357	576	177	130.3	104.9	41	71	2
DC-10010		260	133.3	3466	449	709	177	130.3	104.9	41	71	2

\*DC-50 cylinder has non-removable grooved saddle and no collar thread.

\*\*D1=41mm ; L=20mm ; M=25mm

Plunger Internal Thread	Plunger Thread Length	Base Mounting Holes			Collar Thread	Collar Thread Length	Wt. (kg)	Model Number
		Bolt Circle	Thread	Thread Depth				
O (in)	P (mm)	U (mm)	V (in)	Z (mm)	W (in)	X (mm)		
* *	*	28	5.6mm	—	—	—	1.0	DC-50
3/4"-16	14	25	1/4"-20UN	14	1 1/2"-16	28	1.0	DC-51
3/4"-16	14	25	1/4"-20UN	14	1 1/2"-16	28	1.5	DC-53
3/4"-16	14	25	1/4"-20UN	14	1 1/2"-16	28	1.9	DC-55
3/4"-16	16	25	1/4"-20UN	14	1 1/2"-16	28	2.4	DC-57
3/4"-16	16	25	1/4"-20UN	14	1 1/2"-16	28	2.8	DC-59
#10-24UN	6	39	5/16"-18UN	12	2 1/4"-14	26	1.8	DC-101
1"-8	19	39	5/16"-18UN	12	2 1/4"-14	26	2.3	DC-102
1"-8	19	39	5/16"-18UN	12	2 1/4"-14	26	3.3	DC-104
1"-8	19	39	5/16"-18UN	12	2 1/4"-14	26	4.4	DC-106
1"-8	19	39	5/16"-18UN	12	2 1/4"-14	26	5.4	DC-108
1"-8	19	39	5/16"-18UN	12	2 1/4"-14	26	6.4	DC-1010
1"-8	19	39	5/16"-18UN	12	2 1/4"-14	26	6.8	DC-1012
1"-8	19	39	5/16"-18UN	12	2 1/4"-14	26	8.2	DC-1014
1"-8	25	47	3/8"-16UN	12	2 3/4"-16	30	3.3	DC-151
1"-8	25	47	3/8"-16UN	12	2 3/4"-16	30	4.1	DC-152
1"-8	25	47	3/8"-16UN	12	2 3/4"-16	30	5.0	DC-154
1"-8	25	47	3/8"-16UN	12	2 3/4"-16	30	6.8	DC-156
1"-8	25	47	3/8"-16UN	12	2 3/4"-16	30	8.2	DC-158
1"-8	25	47	3/8"-16UN	12	2 3/4"-16	30	9.5	DC-1510
1"-8	25	47	3/8"-16UN	12	2 3/4"-16	30	10.9	DC-1512
1"-8	25	47	3/8"-16UN	12	2 3/4"-16	30	11.8	DC-1514
1 1/2"-16	25	58	1/2"-13UN	19	3 5/16"-12	49	5.9	DC-251
1 1/2"-16	25	58	1/2"-13UN	19	3 5/16"-12	49	6.4	DC-252
1 1/2"-16	25	58	1/2"-13UN	19	3 5/16"-12	49	8.2	DC-254
1 1/2"-16	25	58	1/2"-13UN	19	3 5/16"-12	49	10.0	DC-256
1 1/2"-16	25	58	1/2"-13UN	19	3 5/16"-12	49	12.2	DC-258
1 1/2"-16	25	58	1/2"-13UN	19	3 5/16"-12	49	14.1	DC-2510
1 1/2"-16	25	58	1/2"-13UN	19	3 5/16"-12	49	16.3	DC-2512
1 1/2"-16	25	58	1/2"-13UN	19	3 5/16"-12	49	17.7	DC-2514
1 1/2"-16	25	—	—	—	3 5/16"-12	49	18.1	DC-308
—	—	95	1/2"-13UN	19	5"-12	55	15.0	DC-502
—	—	95	1/2"-13UN	19	5"-12	55	19.1	DC-504
—	—	95	1/2"-13UN	19	5"-12	55	23.1	DC-506
—	—	95	1/2"-13UN	19	5"-12	55	37.6	DC-5013
—	—	—	—	—	5 3/4"-12	44	29.5	DC-756
—	—	—	—	—	5 3/4"-12	44	59.0	DC-7513
—	—	—	—	—	6 7/8"-12	44	33.1	DC-1004
—	—	139	3/4"-10UN	25	6 7/8"-12	44	59.0	DC-1006
—	—	139	3/4"-10UN	25	6 7/8"-12	44	59.0	DC-1008
—	—	139	3/4"-10UN	25	6 7/8"-12	44	72.6	DC-10010



DC-1006 and DC-10010 models